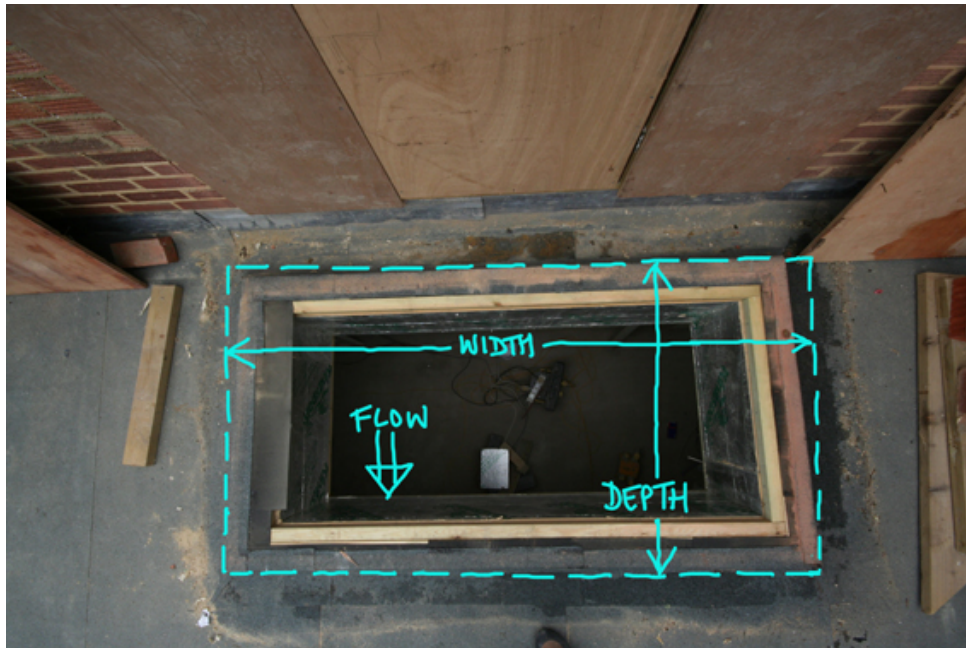


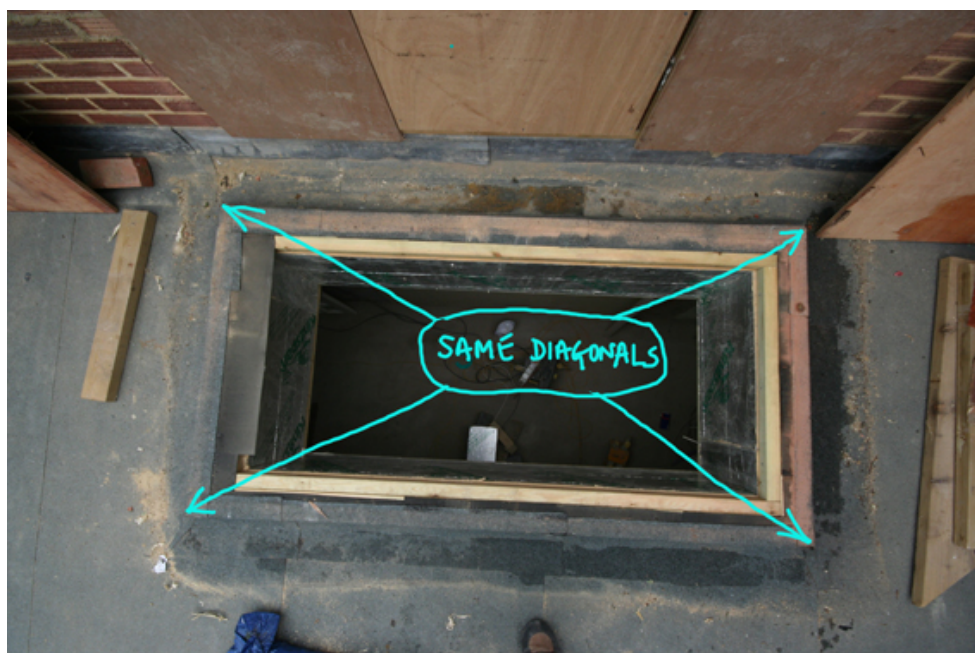
CANTIFIXDIRECT (measuring rooflights)

IT IS VERY IMPORTANT YOU MEASURE THE OPENING CORRECTLY.

Once the upstands have been formed you can take the outside dimensions and use the largest dimension across the width and the largest dimension across the depth (the width of a roof is measured across the slope whereas the depth is measure down the slope). This will be the overall size of the opening.



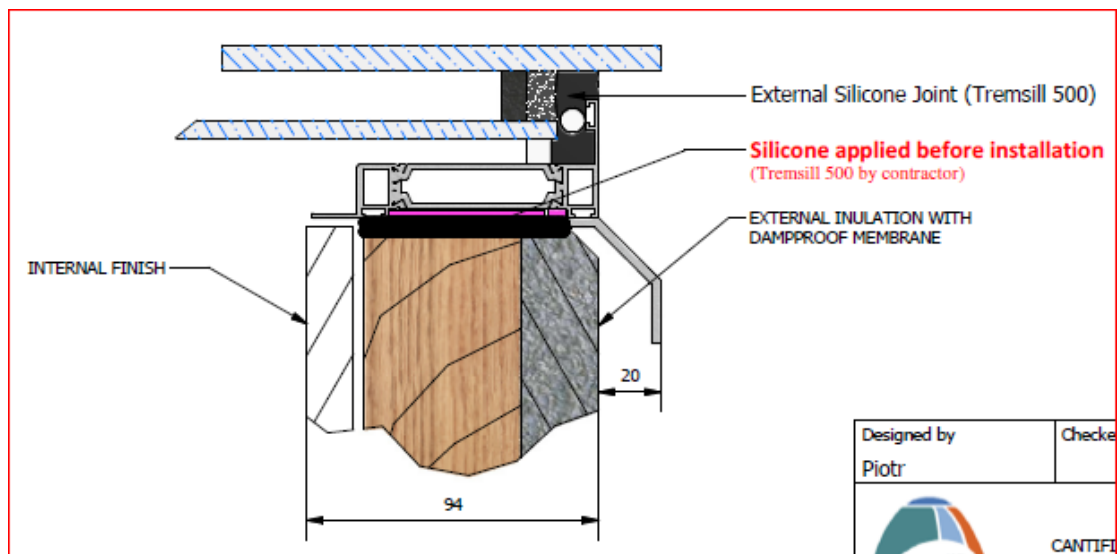
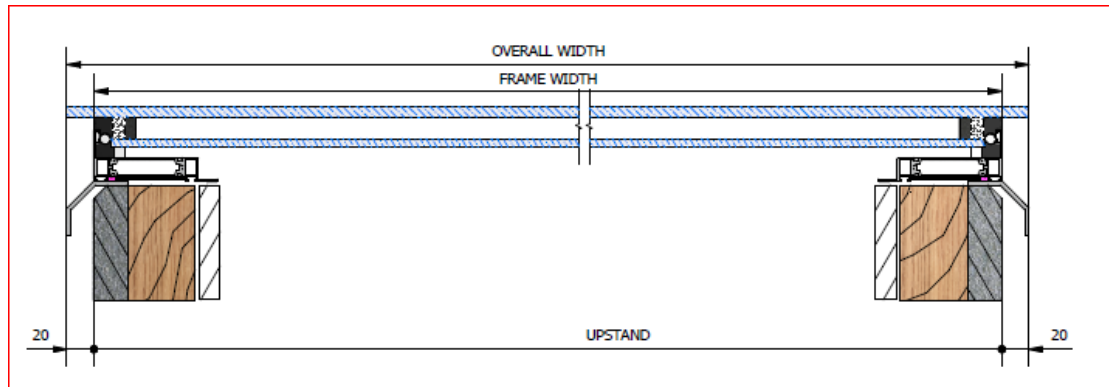
It is necessary to check the diagonals to make sure the opening is square. If not you need to make allowance for this in the size you order.



CANTIFIXDIRECT (measuring rooflights)

IT IS VERY IMPORTANT YOU INCLUDE THE CORRECT TOLERANCE.

Having correctly measured the size of the opening this is the same as the overall frame dimension. There is a folded aluminium flashing on all four sides that acts as a skirt and projects a further 20mm out from the frame.



Even though these rooflights can be set at any slope and will still remain completely watertight it is advisable to have a fall on the glass to allow the water to run off. This is best taken over the smaller dimension so that the fall is less pronounced. To avoid water collecting and pooling in the centre of the glass the slope should be at least 3 degrees whereas to allow a greater flow of water from the glass this should be increased. The amount of water that remains on the glass after rain will depend not only upon this slope but also how clean the glass is kept.