

# CANTIFIXDIRECT (Measuring the frame)

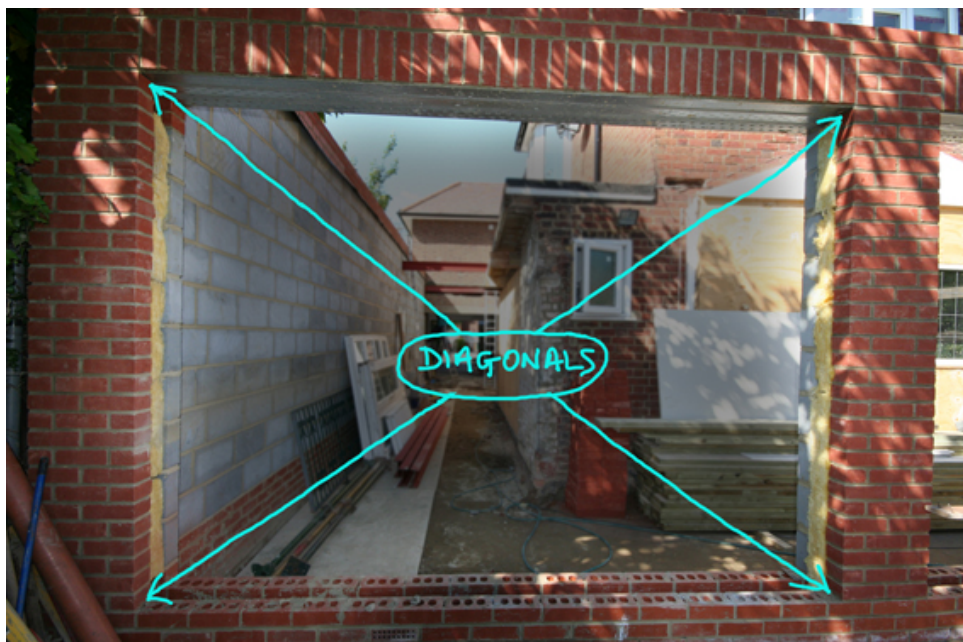
**IT IS VERY IMPORTANT YOU MEASURE THE OPENING CORRECTLY.**

**FOR DOORS AND WINDOWS:**

If you have an opening already prepared then you must start by checking whether the walls are upright and the top and bottom are level. Once you have established this; then the width of your opening is the smallest dimension between the two walls; and the height is the smallest dimension from top to bottom.



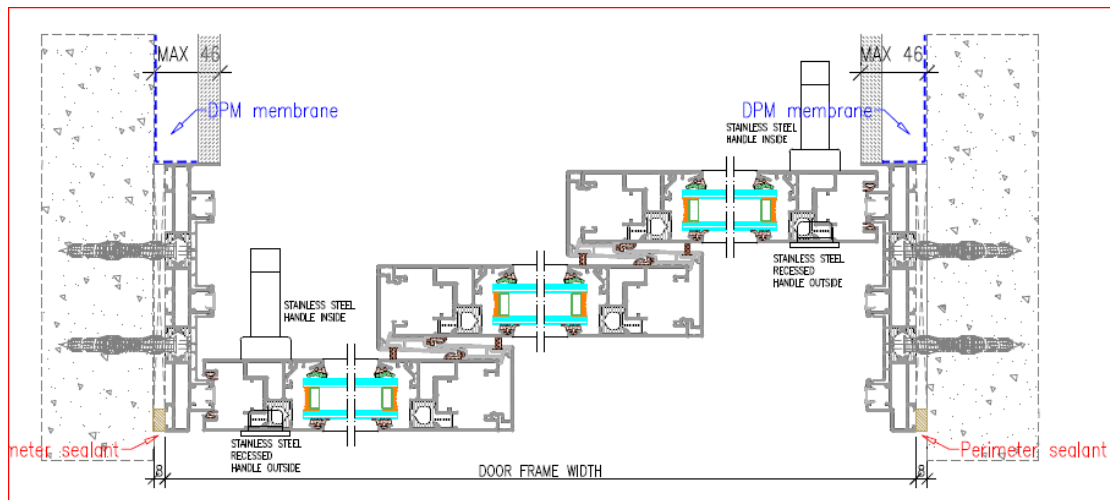
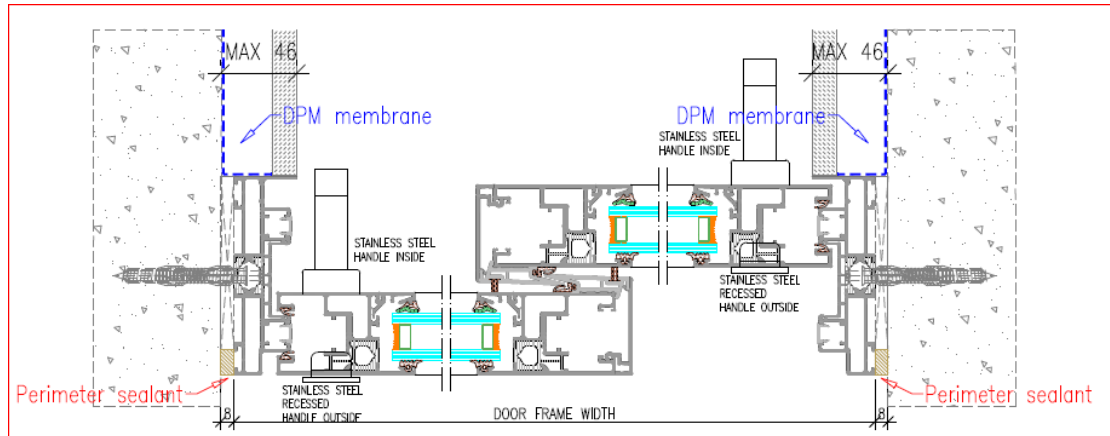
If the height dimensions on either side of the opening are the same and the width dimensions at the top and bottom are also the same, then the two diagonals must be identical. This is the easiest way to check the dimensions are correct.



# CANTIFIXDIRECT (Measuring the frame)

**IT IS VERY IMPORTANT YOU INCLUDE THE CORRECT TOLERANCE.**

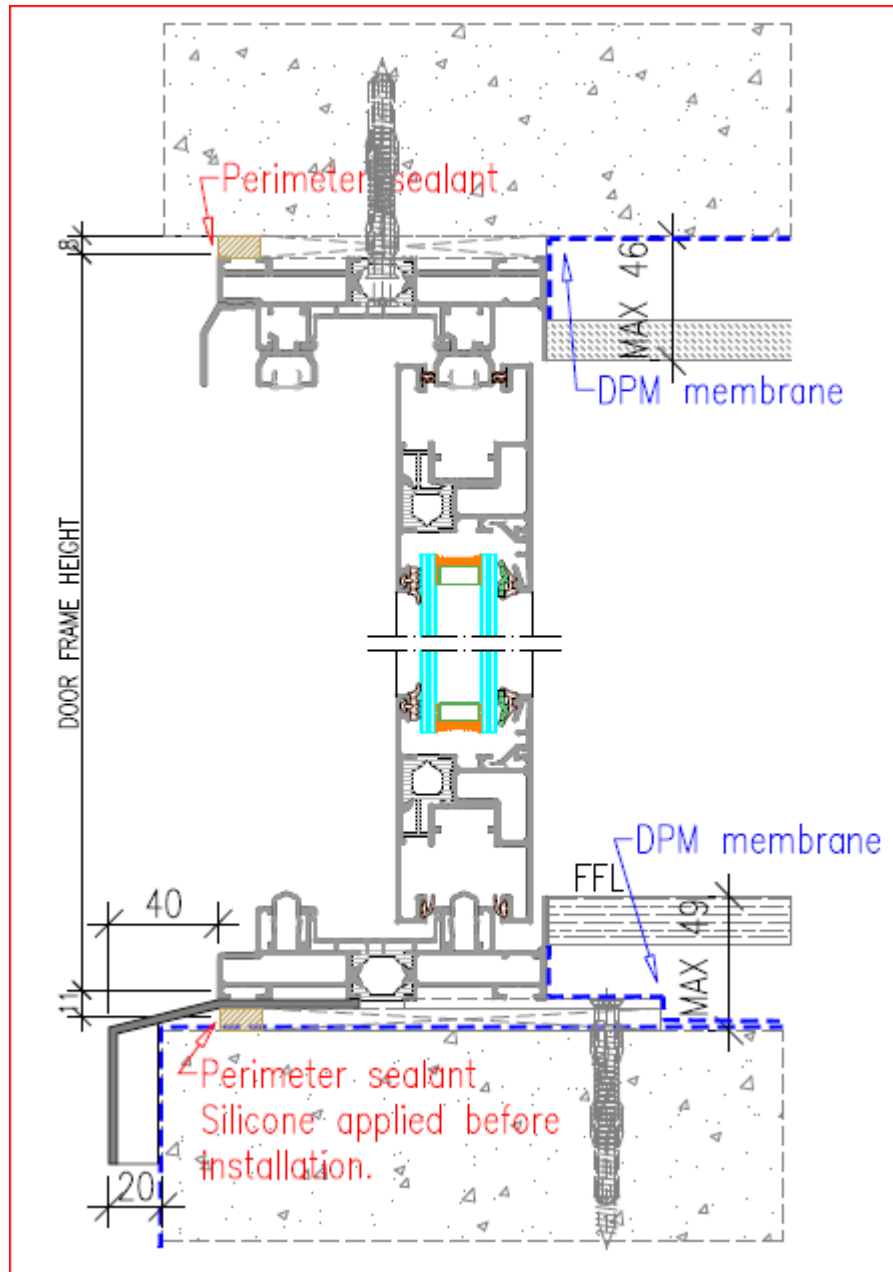
Having correctly measured the size of the opening you need to subtract a minimum of 8mm from each side. This will give you the overall width of the frame that you need to order.



# CANTIFIXDIRECT (Measuring the frame)

**IT IS VERY IMPORTANT YOU CHECK THE FINISHED FLOOR LEVEL.**

For the height of the frame subtract a minimum of 8mm from the top and bottom to give the order size. You will need to check the finished floor level (FFL) so that it does not come above the threshold (maximum 49mm). A standard set-back of 20mm has been taken from the outside face of the frame to the face of the external finishes.



## CANTIFIXDIRECT (Measuring the frame)

When a “flush threshold” has been specified then the height of the frame is given from the top of the frame down to the FFL. The threshold is allowed to them be let into the floor allowing the external level to match the internal level. The upstand should be build 49mm below FFL

