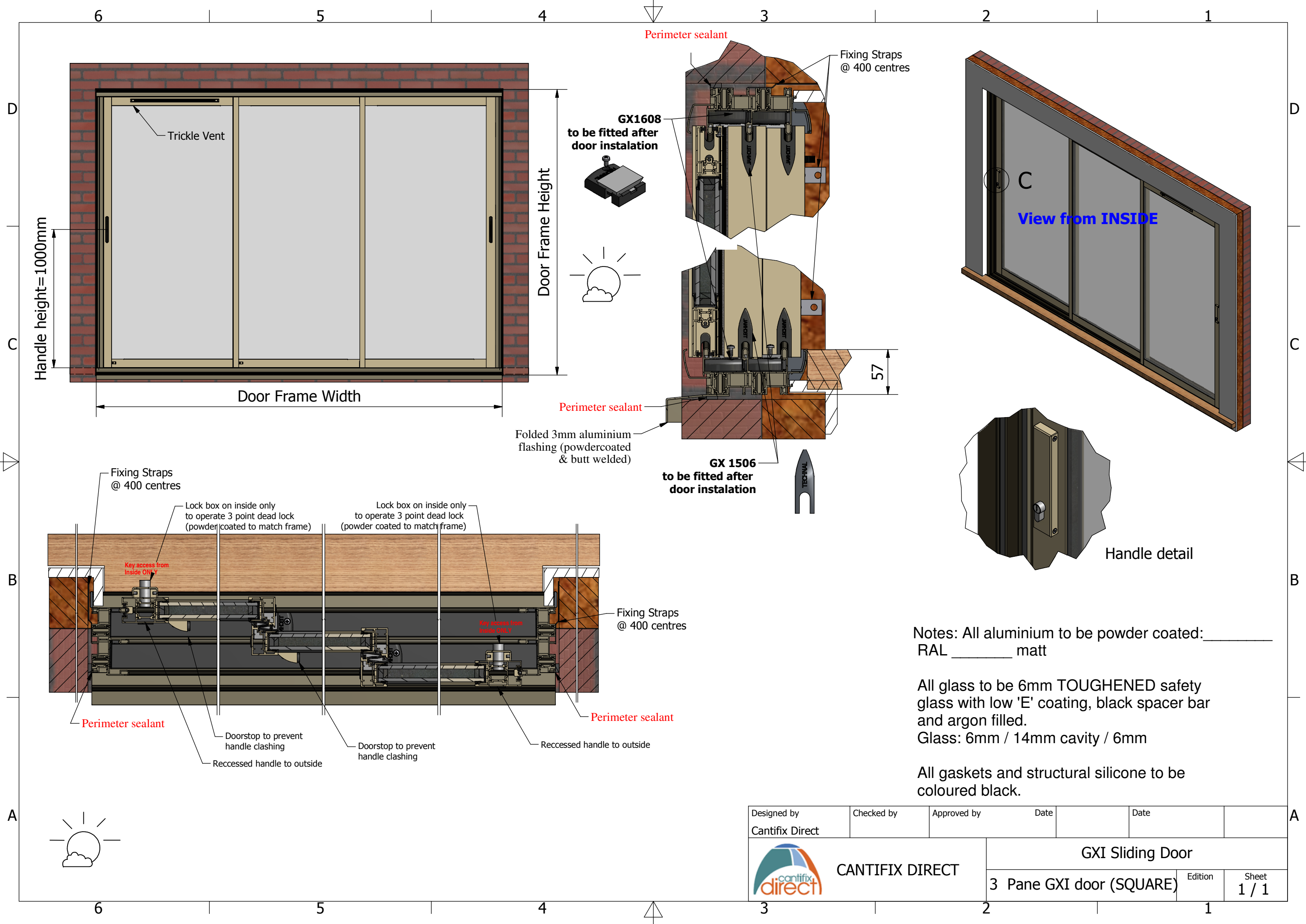



Designed by Cantifix Direct	Checked by	Approved by	Date	Date	
Cantifix Direct			GX1 Sliding Door		
2 Pane GXI door (square) A			Edition	Sheet 1 / 1	

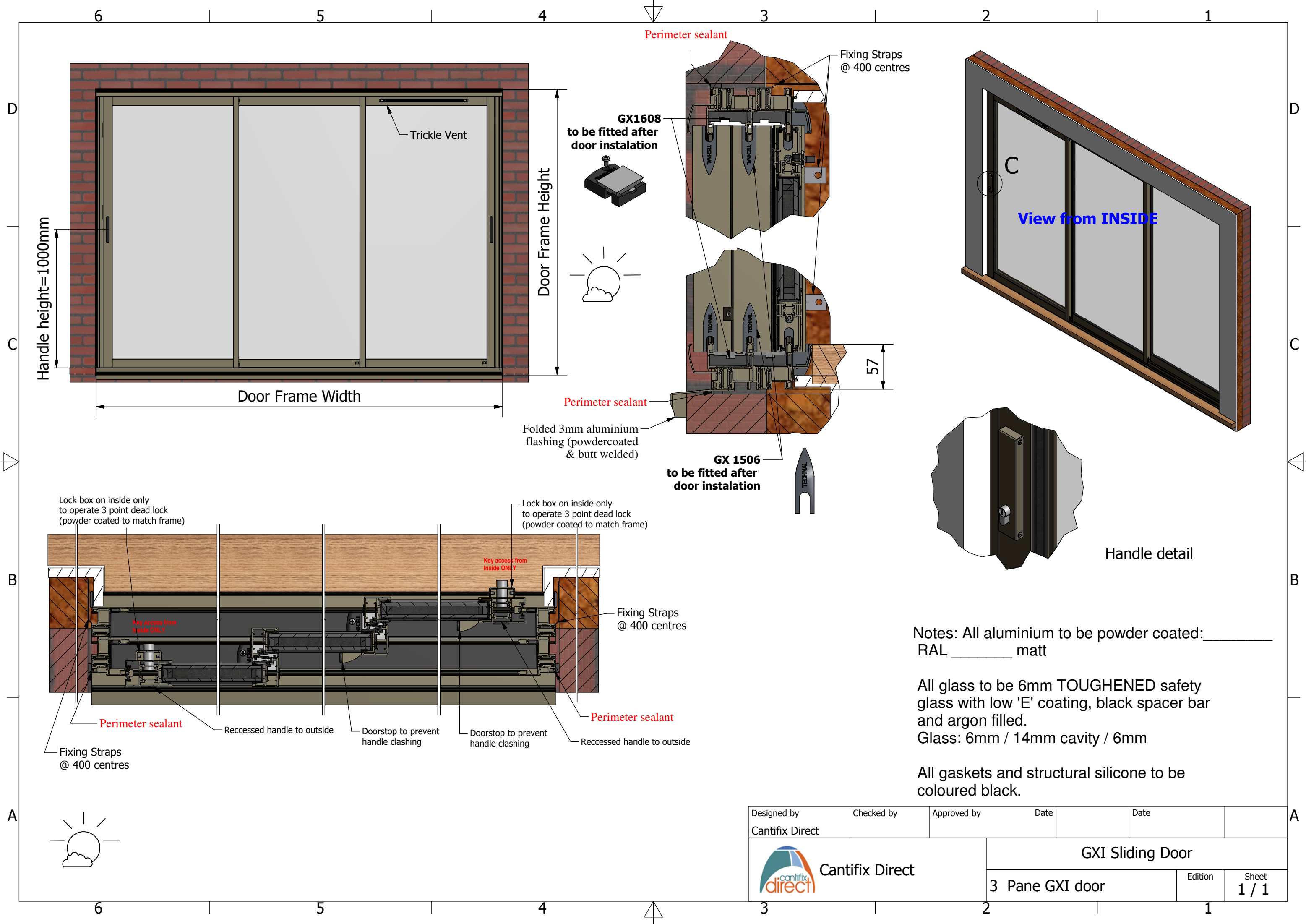



Notes: All aluminium to be powder coated: \_\_\_\_\_  
RAL \_\_\_\_\_ matt

All glass to be 6mm TOUGHENED safety glass with low 'E' coating, black spacer bar and argon filled.  
Glass: 6mm / 14mm cavity / 6mm

All gaskets and structural silicone to be coloured black.

Designed by Cantifix Direct	Checked by	Approved by	Date		Date	
 CANTIFIX DIRECT			GXI Sliding Door			
			3 Pane GXI door (SQUARE)		Edition	Sheet 1 / 1



Designed by Cantifix Direct	Checked by	Approved by	Date		Date	
 Cantifix Direct			GXI Sliding Door			
			3 Pane GXI door		Edition	Sheet 1 / 1